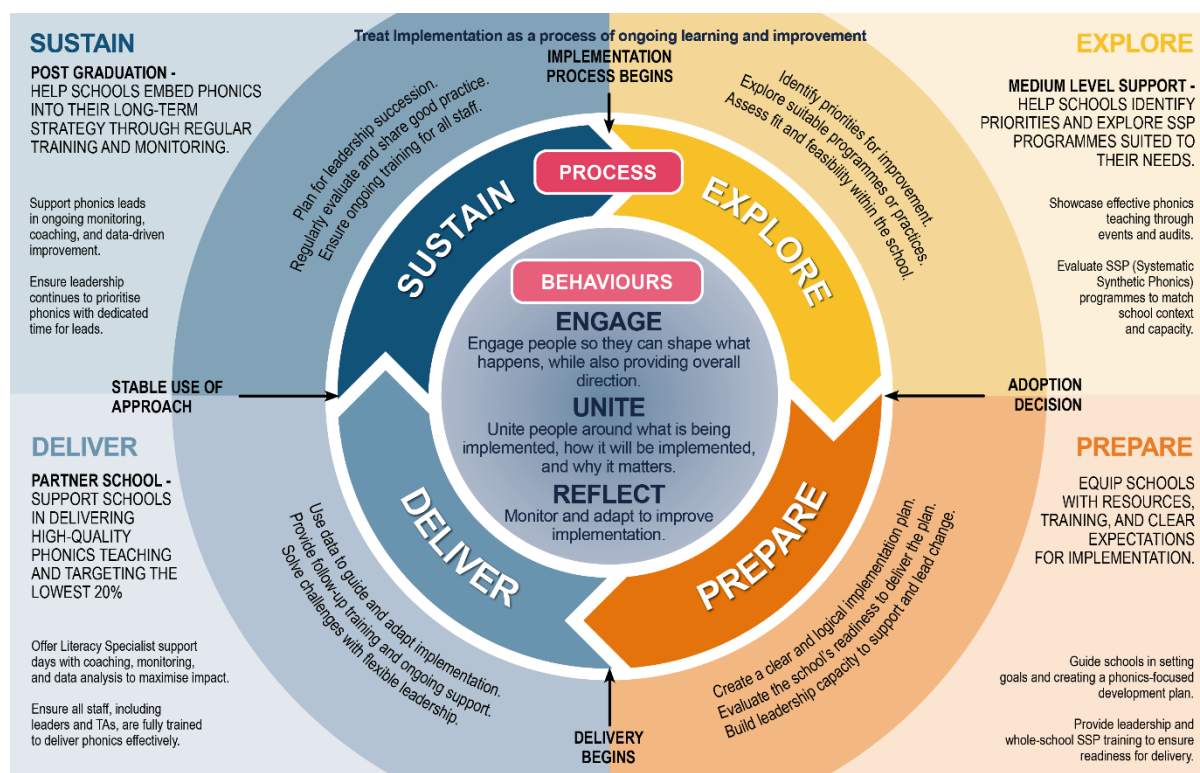


SELF-REFERRAL FORM



We are delighted that you are interested in the support in early language and reading teaching that we are offering as an English Hub school. Please provide as much information below as possible. We will use this to prioritise among schools where there are more applications than we can accommodate.

School Information				
School Name				
Postcode		URN		
Local Authority of your school				
Primary School Telephone Number				
Type of School				
How many forms of entry does your school have?				
Proportion of pupils eligible for PP %		Proportion of SEND pupils %		
Phonics Screening Check Results	2023	2024	2025	% of children predicted to pass the Y1 PSC 2026

Phonics Screening Check scores - Contextual Information

Any relevant contextual information about your Phonics Screening Check scores:

Current Provision for Systematic Synthetic Phonics

Current Phonics programme and desired programme if changing:

Ofsted Rating and Contextual Information

Most recent Ofsted Grade and any additional points of relevance:

Please select the eligibility criteria your school matches

<input type="checkbox"/>	Schools with lower than national average PSC scores.
<input type="checkbox"/>	Primary schools where the lowest 20% of children are not on course to reach the expected standard (indicated through regular phonics assessment in school).
<input type="checkbox"/>	Primary schools with a lower-than-average percentage of pupils meeting the expected standard in the Phonics Screening Check (79% met the expected standard in 2023).
<input type="checkbox"/>	Primary schools with a higher-than-average proportion of children eligible for pupil premium (In 2023/24 the pupil premium national average was 28.4%).
<input type="checkbox"/>	Primary schools with a high proportion of groups considered hard to reach such as English as an Additional Language (EAL), Free School Meals (FSM) and travellers.
<input type="checkbox"/>	Schools referred by local partners (e.g. National Leaders in Education (NLEs), Regional Schools Commissioners (RSCs), Local Authorities (LAs).
<input type="checkbox"/>	Primary schools where standards in phonics are identified as areas for development through Ofsted inspection findings.
<input type="checkbox"/>	Primary schools where there is a risk of declining standards in phonics.

What support are you interested in from the English Hub?

<input type="checkbox"/>	Receiving an audit and then accessing funding Becoming a Partner School (funding plus up to 12 days support from a Literacy Specialist over 2 years, with a third year to sustain support)
--------------------------	---

Primary contacts for follow-up

Name of Headteacher	
Email Address of Headteacher	
Name of Phonics/Reading Leader	
Email of Phonics/Reading Leader	
Name of School Business Manager or Trust Finance Manager	
Email Address of School Business Manager or Trust Finance Manager	